

**P3TEC**

advanced wall protection

 Impact

 Chemical

 Abrasion



**P3**TEC



# Advanced Wall Protection

The technical innovation of P3TEC debuts in a beautiful wall protection collection with three key advantages:



# Performance



## Chemical Resistant

Protected with a cap film, P3TEC resists surface damage from the harshest chemicals and staining agents\*. Spray paint, permanent markers and more can be easily removed, leaving P3TEC unblemished and unstained.



## Impact Resistant

P3TEC is engineered to withstand an impact force much greater\* than other wallcovering and wall protection products. P3TEC retains key advantages of physical flexibility and provides superior resistance to damage from carts and other moving objects.



## Abrasion Resistant

To protect against surface damage from contact with items like chair backs and wheeled devices, P3TEC provides exceptional\* abrasion resistance.

\*See page 48 for specifications and ASTM test results

# Easy to Use



## Seamless Covering

Give your walls a full-height, continuous look. No need to install rigid sheets horizontally, and no caulk, reveals or connection pieces are required. The only accessory you need is coordinating corner guards for outside corners.



## By the Roll

Compared to 4' x 8' rigid sheets, P3TEC ships, handles and installs easily, in 15-yard rolls, with no need to lay flat until ready to install.



## Installation

Using techniques from Type II wallcovering, P3TEC installs simply with wallcovering adhesive, and is easily trimmed around permanent fixtures. P3TEC is strippable and can be removed years later without destroying the drywall.

Contact distributor for installation instructions.

1. Prep



2. Cut



3. Adhesive



4. Trim



# Design



The key breakthrough of P3TEC is the compelling collection of nine designs, with eight emboss textures, and 148 color choices. Bring the look of silk, linen and wovens to high-traffic, high-abuse areas in healthcare, food service, transportation and much more.



## Collection



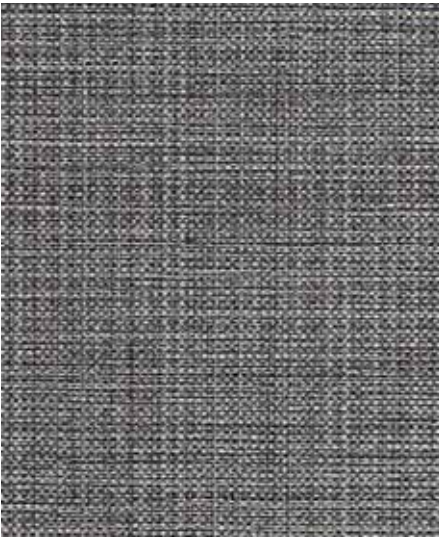
In-Grained



Raffia Weave



Sahara Silk



Simplicity



Stellar



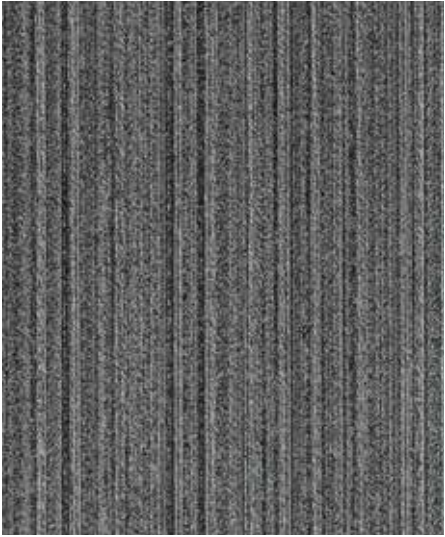
Stellar Streak



Tic-Tac-Texture



Tranquility



Uplift



# In-Grained



Dogwood

• P3T-60157



Cedar

• P3T-60158



Cypress

P3T-60156



Pecan

P3T-60159



Teak

• P3T-60160



Soft Maple

• P3T-60155



Birchwood

• P3T-60165



French Oak

P3T-60164



Ash Grey

• P3T-60163



Rosewood

• P3T-60161



Ebony

• P3T-60162

Due to the printing process, colors may vary slightly from actual product.

• Available in Type II wallcovering

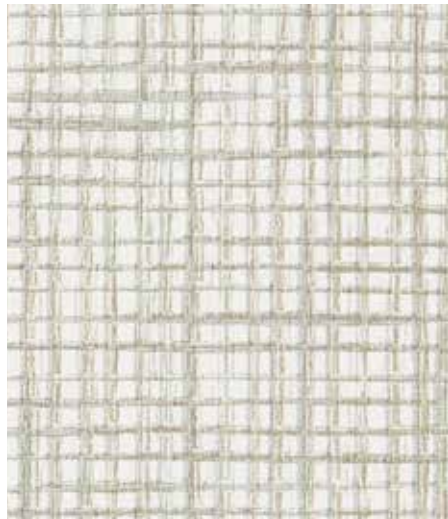




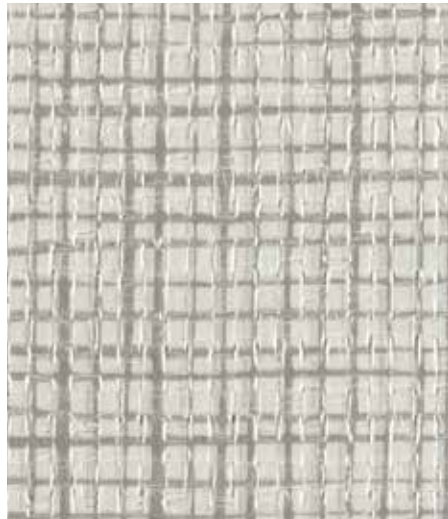
# Raffia Weave



Cashmere • P3T-60057



Wild Oats P3T-60053



Bianca • P3T-60052



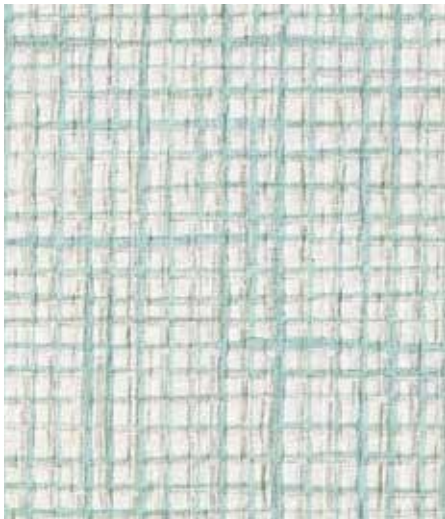
Maize P3T-60054



Canvas • P3T-60055



Linen • P3T-60056



Fountain Grass P3T-60045



Tussah • P3T-60050



Floss • P3T-60058



Seagrass • P3T-60046



Antique Blue • P3T-60047



Smokewood • P3T-60059



Rein • P3T-60051



Blackbent • P3T-60048



Mangrove • P3T-60049

Due to the printing process, colors may vary slightly from actual product.

Sahara Silk  
Deep Sea P3T-60001  
Fès P3T-60008



# Sahara Silk



Deep Sea • P3T-60001



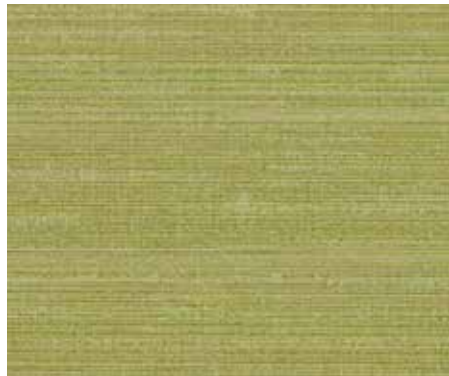
White Lamb • P3T-60006



Ramady • P3T-60007



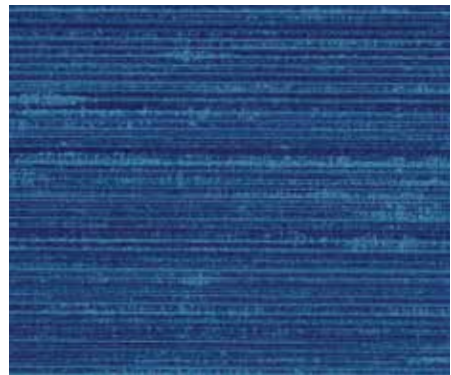
Blue City • P3T-60005



Menara Gardens P3T-60004



Fès • P3T-60008



Zellij • P3T-60002



Tagine • P3T-60003



Moroccan Night • P3T-60009



Royal Palace • P3T-60013



Tan-Tan • P3T-60014



Bisteeya P3T-60015



Taroudant • P3T-60011



Berber • P3T-60012



Safi Yellow P3T-60019



Meknès P3T-60010



Sahara • P3T-60016



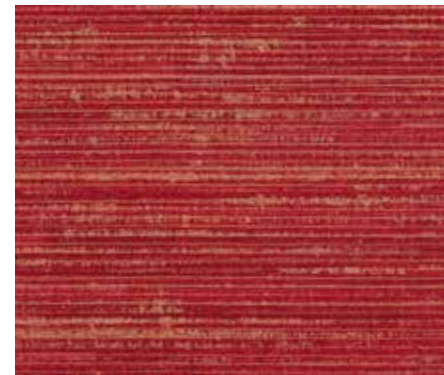
Bortokal P3T-60020



Atlas Mountains • P3T-60017



Tangier • P3T-60018

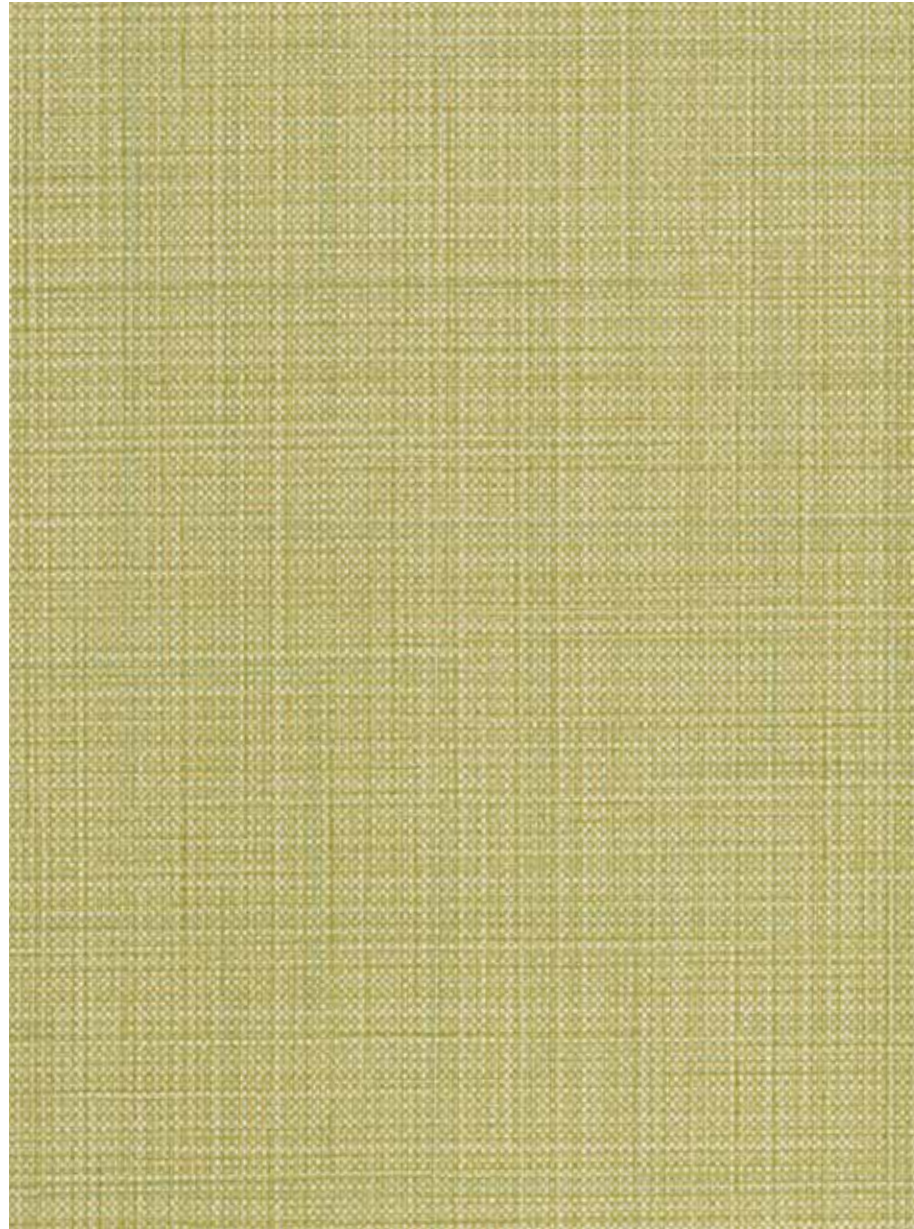


Kilim P3T-60021

Due to the printing process, colors may vary slightly from actual product.



# Simplicity



Lemon Grass • P3T-60063



Snowflake • P3T-60073



Cream • P3T-60071



Tall Grass • P3T-60067



Courtland Apple • P3T-60065



Smack Melon • P3T-60064



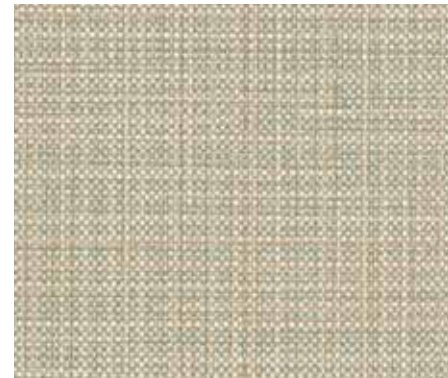
Copper • P3T-60066



Oyster • P3T-60072



Cloud 9 • P3T-60070



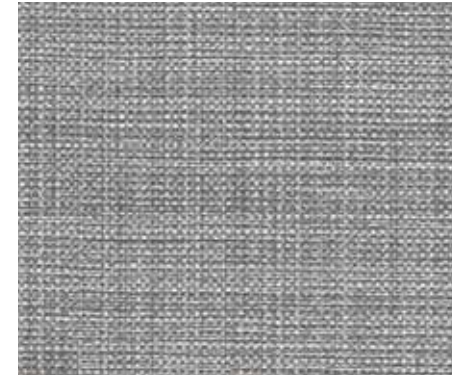
Stone • P3T-60069



Mushroom • P3T-60068



Pebble • P3T-60074



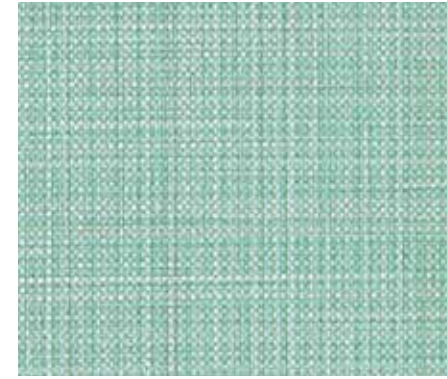
Cinder • P3T-60077



Avenue • P3T-60075



Black Metal • P3T-60076



Serenity P3T-60062



Caribbean • P3T-60061

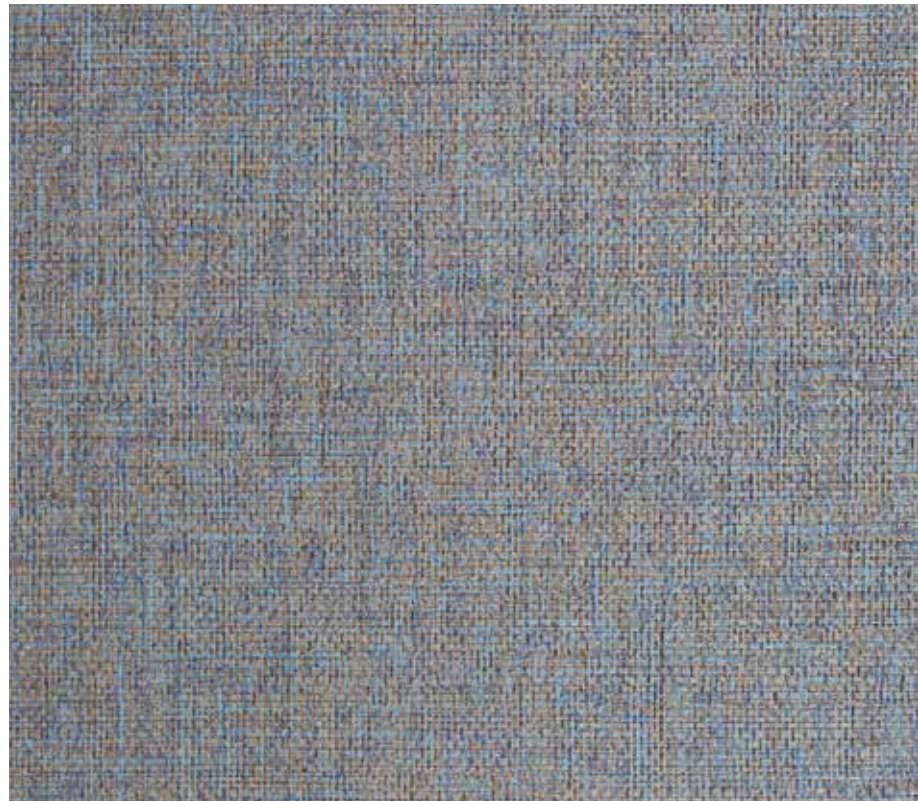


Plum Passion • P3T-60060

Due to the printing process, colors may vary slightly from actual product.



# Stellar



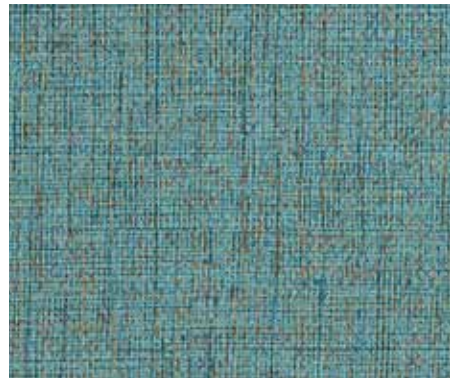
Blue Swipe • P3T-60134



Hailstorm P3T-60120



Gilded Ash • P3T-60121



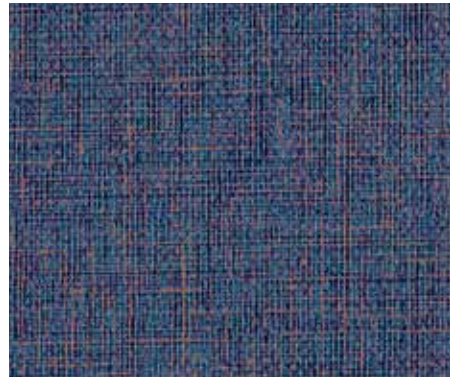
Beryl Blue • P3T-60137



Pale Powder • P3T-60136



Silver Scratch • P3T-60122



Royal Reveal • P3T-60138



Brassy Olive • P3T-60132



Grey Lead • P3T-60135



Erased • P3T-60127



Take-away Tan • P3T-60129



White Out • P3T-60128



Platinum • P3T-60126



Scoured Gold • P3T-60130



Pale Penny • P3T-60140



The Rub • P3T-60124



Chafed Straw • P3T-60131



Persimmon • P3T-60139



Scored Bronze • P3T-60133



Neutral Flake • P3T-60125



Bark • P3T-60123

Due to the printing process, colors may vary slightly from actual product.





# Stellar Streak



Carbon

•P3T-60154



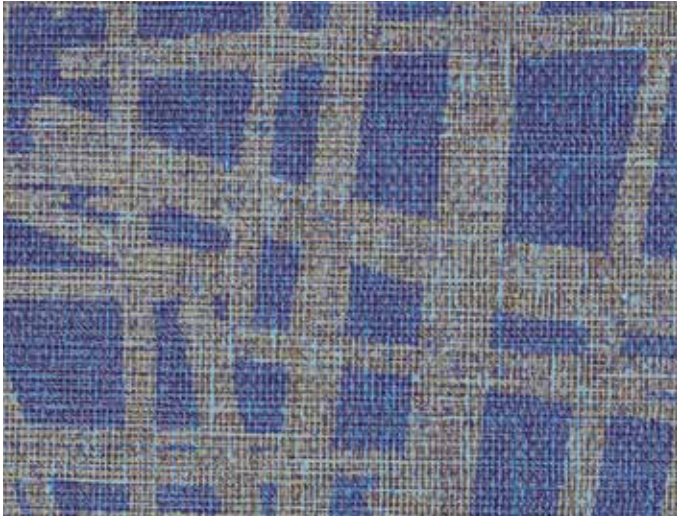
Hailstorm

P3T-60152



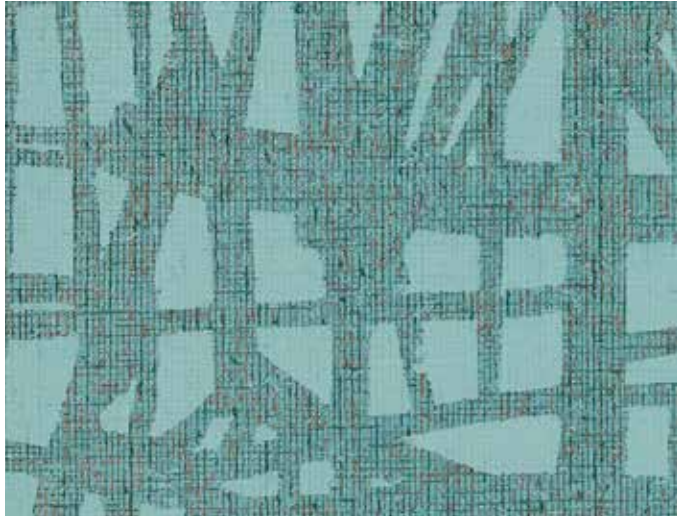
Silver Scratch

•P3T-60153



Blue Swipe

•P3T-60146



Beryl Blue

P3T-60145



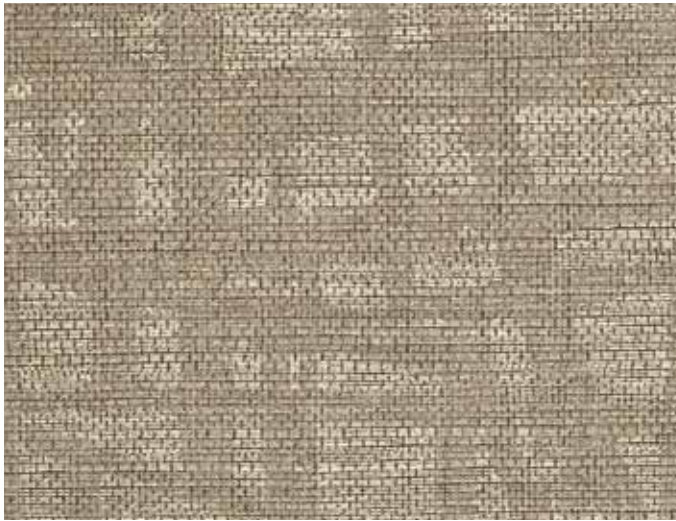
White Out

P3T-60151



Erased

•P3T-60150



The Rub

•P3T-60148



Take-away Tan

•P3T-60149



Grey Lead

•P3T-60147

Due to the printing process, colors may vary slightly from actual product.



# Tic-Tac-Texture



Dark Duet •P3T-60091



Taupe Tempo •P3T-60093



Rock Band •P3T-60088



Misty Melody •P3T-60086



Night Voice •P3T-60090



Silver Sonata •P3T-60092



Neutral Note •P3T-60094



Brass •P3T-60085



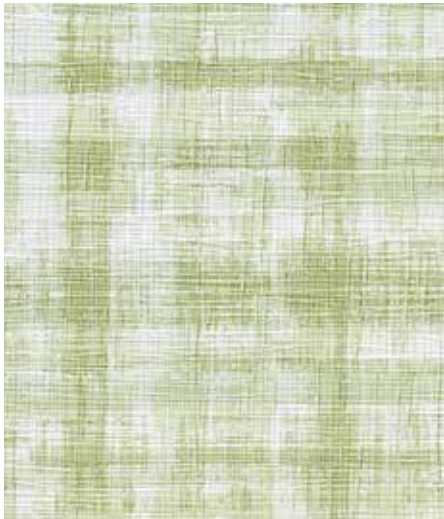
Air Drums •P3T-60095



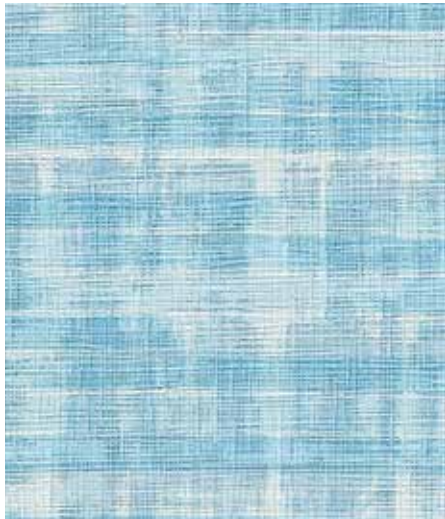
Teal Tango P3T-60082



Ecru Ensemble •P3T-60087



Lyrical Leaf P3T-60083



Surf's Song P3T-60081



Golden Guitar •P3T-60084



Country Chord •P3T-60089



The Blues P3T-60080

Due to the printing process, colors may vary slightly from actual product.



Tranquility  
Cognac P3T-60030  
Whispered Taupe P3T-60033

# Tranquility



Cognac •P3T-60030



Calm Ivory •P3T-60025



Buttercream •P3T-60026



Liquid Gold •P3T-60027



Brazen Red P3T-60028



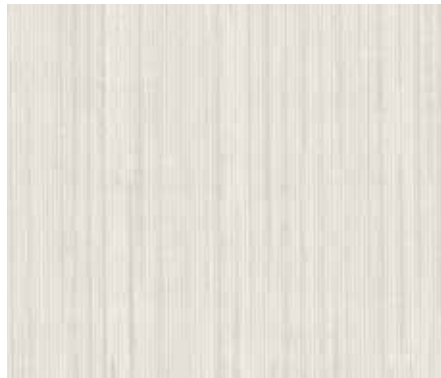
Tiger Lily P3T-60029



Brownstone •P3T-60031



Soft White •P3T-60035



Winter •P3T-60036



Dove Grey •P3T-60037



French Beige •P3T-60034



Whispered Taupe •P3T-60033



Demure Heather •P3T-60038



Limed P3T-60042



English Toffee •P3T-60032



Soulful Grey •P3T-60039



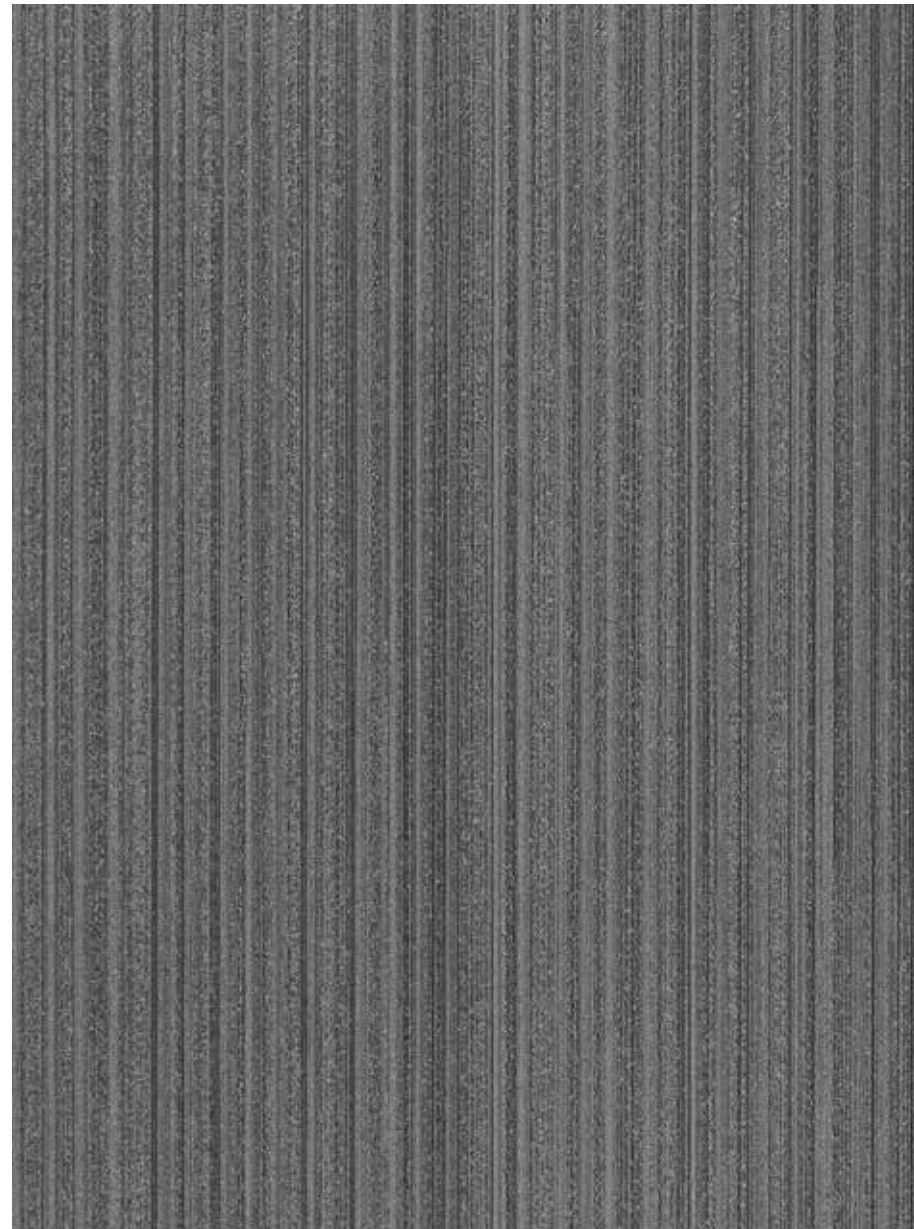
Garden Rain •P3T-60041



Mermaid Teal •P3T-60040

Due to the printing process, colors may vary slightly from actual product.





Pewter Grey • P3T-60108



Snow • P3T-60106



Silver Wash • P3T-60107



Raw Sugar • P3T-60111



Lapis • P3T-60103



Clear Blue • P3T-60102



Lilac P3T-60104



Breathless • P3T-60105



Winter Ivory • P3T-60113



Fresh Pear • P3T-60100



Bone White • P3T-60112



Royal Cream • P3T-60114



Early Spring P3T-60101



Cinnamon • P3T-60110



Ginger • P3T-60115



Oiled Brass • P3T-60116



Chocolate • P3T-60109



Danger • P3T-60117

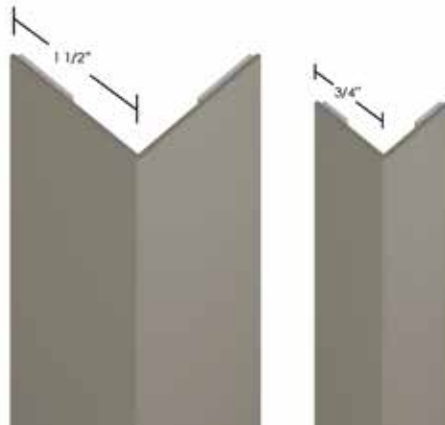
Due to the printing process, colors may vary slightly from actual product.



# Corner Guard

Select from 65 colors for outside corner protection, available in two wing sizes (3/4" and 1 1/2") and two lengths (8' and 12'). No additional connecting pieces are required for installation.

See distributor for samples and color/wing/length product codes.



	Cloud	CG101		Moon Dust	CG102
	Canyon Grey	CG103		Cement	CG104
	Ashes	CG105		Cobblestone	CG106
	Dry Charcoal	CG107		Gargoyle	CG108
	Onyx	CG109		Burnt Grey	CG110
	Amethyst Smoke	CG111		French Navy	CG112
	Dark Denim	CG113		Perky Blue	CG114
	Blue Grey	CG115		Frost	CG116
	Rain Cloud	CG117		Sea Breeze	CG118
	Scotch Pine	CG119		Smithsonite	CG120
	Pale Clover	CG121		Misty Harbor	CG122

	Eucalyptus	CG123		Vineyard	CG124		Washed Green	CG125		Terra Verde	CG126
	Raffia Cream	CG127		Eggnog	CG128		Sheepskin	CG129		China Clay	CG130
	Porcelain	CG131		Bone	CG132		Antique Buff	CG133		Light Mocha	CG134
	Barely Brown	CG135		Sand Castle	CG136		Navajo White	CG137		Aged Cream	CG138
	Vintage Tan	CG139		Desert Tan	CG140		Latte	CG141		Soft Ecru	CG142
	Fawn	CG143		Toasted Tan	CG144		Almond	CG145		Amber	CG146
	Terra Cotta	CG147		Carnelian	CG148		Poinsettia	CG149		Berry Preserve	CG150
	Coffee	CG151		Cocoa	CG152		Mousse	CG153		Cigar	CG154
	Pinecone	CG155		Oyster	CG156		Macadamia Nut	CG157		Tofu	CG158
	Newstone	CG159		Abalone	CG160		Sparrow	CG161		Gravel	CG162
	Brushed Zinc	CGM163		Brushed Mercury	CGM164		Brushed Copper	CGM165			

Due to the printing process, colors may vary slightly from actual product.

# Product Specifications

Details		Performance Advantages			
Width	Trims to 48"				
Packaging	15 yard rolls				
Backing	Heavy Polyester/ Cotton knit				
Fire Safety	ASTM E-84, Class "A" NFPA 286				
Environmental and Health					
Indoor Air Quality	Meets California Section 01350				
Fungal Resistant	ASTM G-21				
Bacterial Resistant	ASTM G-22				
Sustainability	NSF/ANSI 342, Third-party certified				
EPD	Third-party certified				
HPD	Third-party certified				

	Impact	Chemical	Abrasion
<b>P3TEC</b>	24 – 100+ (See Table)	Fully Chemical Resistant	Highly Resistant
Type III Wallcovering	15	Stain Resistant	Varies
Rigid Sheet	22 – 100+	Stain Resistant	Highly Resistant

### Impact

Impact Resistance  
ASTM D-5420-10  
Gardner Method

Pattern	In-Lbs
In-Grained	60
Raffia Weave	60
Sahara Silk	100+
Simplicity	100+
Stellar	100+
Stellar Streak	100+
Tic-Tac-Texture	60
Tranquility	100+
Uplift	24

### Chemical

Chemical Resistance  
ASTM D-1308  
Spot test covered 3.1.1

Cleaning Agents

- Tide w/H2O
- Virex
- Ammonia
- Isopropyl Alcohol
- Goof Off
- Fantastik
- Lysol
- Hydrogen Peroxide
- Bleach
- Methyl Ethyl Ketone

Results: No change in P3TEC surface from exposure to these agents.

### Abrasion

Abrasion Resistance  
ASTM D-4060-14  
Taber Method

Test Specs

- CS-10F wheel
- 500 gram load @200 cycles
- Weight loss: 0.02%

### Cleaning

ASTM F-793  
Section 7.5

Staining Agents

- Grape Juice
- Mustard
- Black Sharpie
- Ink Pen
- Betadine
- Shoe Polish
- Lipstick
- Black Rubber
- Brake Fluid
- Spray Paint

Results: Each staining agent above was wiped clean with at least one listed cleaning agent.

Best stain removal results can be achieved by use of progressively strong, non-abrasive cleaners, and which can be supplemented by use of a soft bristle brush.

## Type II Wallcovering

For adjacent wall surfaces needing less protection, you can specify yardage for most of the pattern/ color options of the P3TEC program in Type II, 20 oz quality. See individual pages for availability.



Uplift  
Bone White P3T-60112

**P3TEC**

advanced wall protection